

## External Styles with GERD



### External Styles on the USB Stick

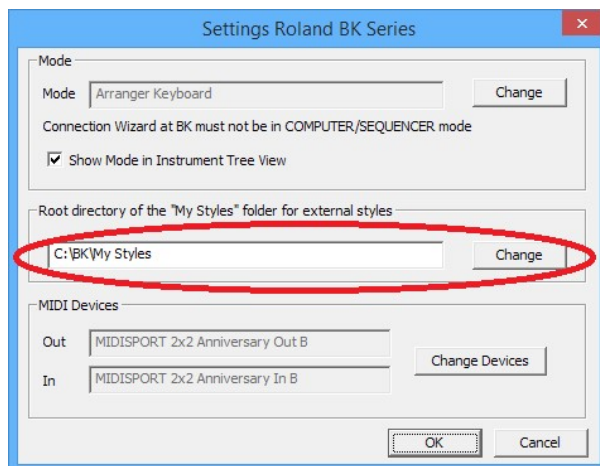
In GERD external styles from the USB stick can be

- assigned to performances (see separate application note related to external styles and performances)
- shown together with the internal styles on GERD's style page (described in this application note)

#### **Important:**

*GERD can only work with performances if GERD is in one of the "Live Play" operation modes (further information related to the different operation modes can be found in the application note related to the settings of the BK series: SettingsRolandBK.pdf).*

### External Styles



External styles are on the USB stick in the directory "My Styles".

In GERD's "Global Settings" for the Roland BK instrument (see pic on the left), the user must select the path to the directory "My Styles".

The directory "My styles" can be either on the hard disk (copy of the data from the USB stick of the BK) or you can select the original USB stick of the BK (of course you have to plug the stick into a free USB port at your PC).

In the performances of the performance list the style is stored with its path (relative to the directory "My Styles").

Example: USB-Stick ==> \My Styles\SubDir\Style01.stl will be saved in the performance as "My Styles\SubDir\Style01.stl".

If you copy the directories "My Styles" and "My Performances" from your USB stick to your PC, you can select the path to "My Styles" as shown in the dialogue above. All references to styles are then stored correctly in the performances (if the performance list is saved in the directory "My Performances") and will be found by the BK (if the USB stick is connected to the BK).

## Loading external styles into GESINI

If a directory for the external styles is defined (see page before), the styles in this directory and in all its subdirectories can be imported into GERD.

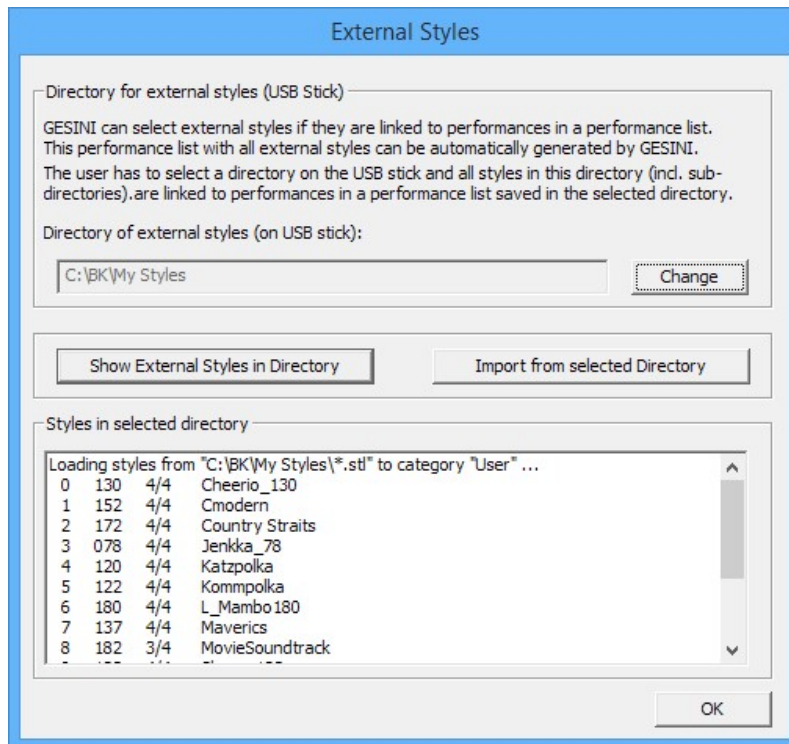
But be careful: The BK can only work with path names not longer than 256 characters (pathname + filename). Too long names for subdirectories may therefore lead to problems.

If you want to work with the external styles you have to copy them into a directory on your PC (e.g. copy the "My Styles" directory from the USB stick to a "My Styles" directory on your hard disk).

Now you have to click on the button "File Directory in PC" on GERD's style page (marked with a red ellipse in the figure below).



If this button is clicked a dialogue appears (see next page) and now you can import the external styles from your hard disk (or USB stick) into GESINI.



In this dialogue you can again specify the directory with the external styles. The button "Show External Styles in Directory" will show you all external styles in the directory (and in all subdirectories).

If you click on the button "Import from selected Directory" all external styles found in the selected category will be imported into **GERD**. Now you can use these styles to define new performances, etc.

With this method you cannot load and play the external styles with **GERD**. This method can "only" provide the external styles to define performances, etc. If you want to play with external styles, you must assign these styles to performances. Then you can select the external styles with **GERD** and they will be loaded into the BK. Further information related to this topic can be found in the document "Convenient Selection of External Styles" (this doc is distributed in pdf format together with **GERD** and can be downloaded in the download center on **GERD**'s website).

## **Question Can external styles be assigned to on of the "Rhythm Families"?**

External styles can be assigned to the different "Rhythm Families"/Style Categories ("Beat", "Rock", "Disco", etc.).

To achieve this assignment, one of the subdirectories in the path of the style must have a name representing a family/category. Then the style will be added to this family/category.

All external styles not assigned to a specific family/category are assigned to the category "USER CATEG.".

Example:

\My Style\Beat\Style01.stl	→ will be added to category "Beat"
\My Style\Beat\Slow\Style02.stl	→ will be added to category "Beat"
\My Style\G 70\Beat\Style03.stl	→ will be added to category "Beat"

If multiple categories are in the name of the path, the last category will be used for the assignment.

Example:

\My Styles\Rock\Disco\Style04.stl	→ will be added to "Disco"
-----------------------------------	----------------------------



**GERD** offers more categories/families than the front panel of the BK (see figure). Of course you can assign external styles also to these categories.

The "keywords" of the pre-defined subdirectories (identical to the front panel of the BK) are "Beat", "Live Band", "Rock", "Disco", "Ballroom", "50's", "Jazz", "Latin", "Bossa", "World".

The "keywords" of the subdirectories for the additional categories are "Country", "Asia", "Piano", "Ballad", "Unplug", "Slow Rock", "Techno", "Rock'n Roll", "Big Band", "Swing", "Soul", "Reggae", "Local", "Gospel", "Africa", "Without Drums", and "Classic".

If none of the keywords is found in the pathname of the external style, the style will be assigned to the category "User Categ.".